

**1. HARDWARE: FUEL LEVEL SENSOR**



See: Fuel Level Sensors Products

**2. HARDWARE: VEHICLE FUEL AND GPS LOGGER**



**GuardMagic mTF3**  
**GuardMagic mTF3Lite**

**Multi Tanks support**

"GPS & Fuel Data Logger with USB output interface" and driver identification function. GuardMagic mTF3 is intended for the automatic logging information about vehicles routes, fuel level in fuel tanks, characteristics of vehicles moving. Fuel monitoring allow to control: fuel consumption, refueling, draining. Transportation information to PC by standard USB flash drive.

Record a routes and parameters of movement (GPS information);  
Record information about fuel level in fuel tanks; till Six tanks (Digital fuel sensor GuardMagic DFSL2);  
Driver identification function;  
Immobilization function;  
Record a condition of external logical sensors;  
Records the engine operation (RPM);  
Record a data from regular vehicle odometer;  
Record a data from digital Thermo sensor or digital Humidity sensor. Till Seven sensors. About 120 Th. records;  
Connection to additional logical circuits and sensors (ignition circuit; Event button, three customers logical sensors);

**Monitoring Software: SmartTracer 50 (150), TrackManager series**



**GuardMagic mTF4**  
**GuardMagic mTF4Lite**

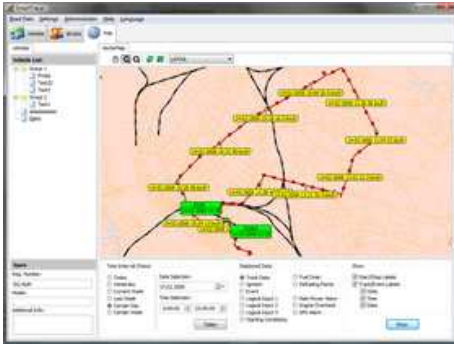
**Multi Tanks support**

**In development**

**Monitoring Software: SmartTracer 50 (150), TrackManager series**



### 3. SOFTWARE

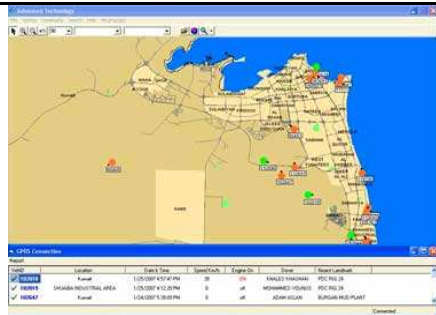


#### SmartTracer 50; SmartTracer 150 (for mTF modules) Multi Tanks support

Program for **GuardMagic mTF** series, "GPS & Fuel Data Logger with USB output". Support up to 3 regular vehicle fuel tank. Generate the series of reports of vehicles activity and fuel consumption: general, daily, detailed.  
**Vehicle activity:** route, mileage, speed driven, drive time, stop times, idle times etc. Visualization in electronics maps the routes and parameters of movements.  
**Fuel control:** fuel consumption for any time interval; fuel fillings and draining with indication of amount and time; visualization in electronics maps the points of fuel fillings and drain.

SmartTracer supports vector maps in **MapInfo** format. SmartTracer also support **WEB MAP server** data (Google).

**SmartTracer 50** supports up to 50 vehicles.  
**SmartTracer 150** supports up to 150 vehicles.



#### Advanced Technology (special solutions for Arabian Gulf Region) Multi Tanks support

Program for **GuardMagic mTF** series, "GPS & Fuel Data Logger with USB output". Support up to 3 regular vehicle fuel tank.

Universal PC based monitoring software with internal maps of Arabian Gulf Region. Client-server based. Support till 999 vehicles. Support: GuardMagic mTF series module Arabian and English languages.

Internal maps: KSA, Kuwait, UAE, Bahrain, Qatar, Oman, Egypt.

### 5. ADDITIONAL COMPONENTS AND EQUIPMENTS



#### GuardMagic mTF programming tool

The technological complete set for programming and changes of adjustments of modules **GuardMagic mTF** by a personal computer

Consist of:

- technological software;
- power supply with cable to mTF;
- PC-mTF programming cable.