

1. HARDWARE



GuardMagic FLPa (Vehicle and Land application)

Series of the universal Electronic Fuel Level Probe with analog output for the fuel monitoring and fuel measurement system.

Output voltage: 0 ... 4,5 V.

Probe length: from 200mm till 4000 mm.

L1: length = 200mm ... 1100mm.

L2: length = 1300mm ... 1700mm.

L3: length = 2000mm ... 4000mm.

GuardMagic FLP can be installed in any type of motor vehicles, tractors, construction and agricultural machines or diesel-electric locomotives or stationary tank.

Directly connection to **GuardMagic mTF1 / mTF2; GuardMagic VB2/VB3; GuardMagic VF2 GuardMagic LFMS**



GuardMagic DFLS2 (Vehicle and Land application)

Series of the special liquid sensors with digital output interface for the fuel measurement system.

Output interface: RS-485.

Probe length: 700, 1000 or 1500 mm.

Resolution: 1024 levels.

GuardMagic DFLS2 -485/700 (485 interface ; l= 700 mm)

GuardMagic DFLS2 -485/1000 (485 interface ; l= 1000 mm)

GuardMagic DFLS2 -485/1500 (485 interface ; l= 1500 mm)

Directly connection to **GuardMagic mTF3; GuardMagic VB3 / VB4; GuardMagic LFMS; GuardMagic VF4**



GuardMagic mTF1 (Vehicle application)

"GPS & Fuel Data Logger with USB output interface" and driver identification function.

GuardMagic mTF1 is intended for the automatic logging information about vehicles trip, fuel level in fuel tanks, characteristics of vehicles moving.

Fuel monitoring allow to control: fuel consumption, refueling, draining.

Transportation information to PC by standard USB flash drive.

Record a routes and parameters of movement (GPS information);

Record information about **fuel level in fuel tanks; till TWO tanks** (analog fuel sensor

GuardMagic FLPa or regular vehicle fuel sensor);

Driver identification function;

Immobilization function;

Record a condition of external logical sensors;

About 240 Th. records;

Connection to additional logical circuits and sensors (ignition circuit; Event button, **three** customers logical sensors);

Monitoring Software: SmartTracer 50 (150), TrackManager series



GuardMagic mTF2 (Vehicle application)



“GPS & Fuel Data Logger with USB output interface” and **driver identification** function. **GuardMagic mTF2** is intended for the automatic logging information about vehicles routes, fuel level in fuel tanks, characteristics of vehicles moving.

Fuel monitoring allow to control: fuel consumption, refueling, draining. Transportation information to PC by standard USB flash drive.

Record a routes and parameters of movement (GPS information);
Record information about **fuel level in fuel tanks; till TWO tanks** (analog fuel sensor **GuardMagic FLPa** or regular vehicle fuel sensor);
Driver identification function;
Immobilization function;
Record a condition of external logical sensors;
Records the engine operation (RPM);
Record a data from regular vehicle odometer;
About 240 Th. records;
Connection to additional logical circuits and sensors (ignition circuit; Event button, **three** customers logical sensors);

Monitoring Software: SmartTracer 50 (150), TrackManager series

GuardMagic mTF3 (Vehicle application)



“GPS & Fuel Data Logger with USB output interface” and **driver identification** function. **GuardMagic mTF3** is intended for the automatic logging information about vehicles routes, fuel level in fuel tanks, characteristics of vehicles moving.

Fuel monitoring allow to control: fuel consumption, refueling, draining. Transportation information to PC by standard USB flash drive.

Record a routes and parameters of movement (GPS information);
Record information about **fuel level in fuel tanks; till Six tanks** (Digital fuel sensor **GuardMagic DFLS2**);
Driver identification function;
Immobilization function;
Record a condition of external logical sensors;
Records the engine operation (RPM);
Record a data from regular vehicle odometer;
Record a data from digital Thermo sensor or digital Humidity sensor. Till Seven sensors.
About 240 Th. records;
Connection to additional logical circuits and sensors (ignition circuit; Event button, **three** customers logical sensors);

Monitoring Software: SmartTracer 50 (150), TrackManager series

GuardMagic LFM serie (Land application)

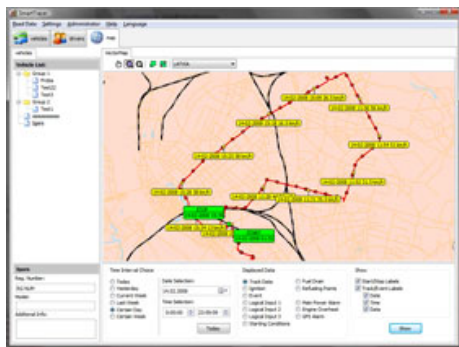
Special GSM-GPRS module for the land fuel monitoring system (land liquid monitoring system).

Can support till 7 digital fuel level sensor and one analog fuel level sensor. Also has an operator identification function.

in development



2. SOFTWARE



SmartTracer 50; SmartTracer 150

Program for **GuardMagic mTF** series, "GPS & Fuel Data Logger with USB output". Support up to 3 regular vehicle fuel tank.

Generate the series of reports of vehicles activity and fuel consumption: general, daily, detailed.

Vehicle activity:

route, mileage, speed driven, drive time, stop times, idle times etc. Visualization in electronics maps the routes and parameters of movements.

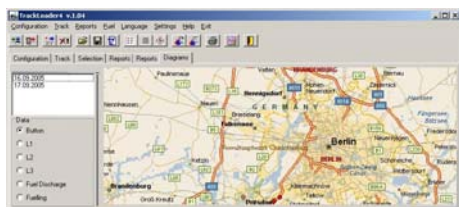
Fuel control:

- fuel consumption for any time interval;
- fuel fillings and draining with indication of amount and time;
- visualization in electronics maps the points of fuel fillings and drain.

SmartTracer supports vector maps in **MapInfo** format.

SmartTracer 50 supports up to 50 vehicles.

SmartTracer 150 supports up to 150 vehicles.



TrackManger 100 (200; 500; 1000; 2000)

Client-Server program for **GuardMagic mTF** series, "GPS & Fuel Data Logger with USB output". Support up to 3 regular vehicle fuel tank.

Generate the series of reports of vehicles activity and fuel consumption: general, daily, detailed.

Vehicle activity:

route, mileage, speed driven, drive time, stop times, idle times etc. Visualization in electronics maps the routes and parameters of movements.

Fuel control:

- fuel consumption for any time interval;
- fuel fillings and drainings with indication of amount and time;
- visualization in electronics maps the points of fuel fillings and drain.

All Fleet activity control

TrackManger supports vector maps in **MapInfo** format.

TrackManager 100 supports up to 100 vehicles.

TrackManager 200 supports up to 200 vehicles.

TrackManager 500 supports up to 500 vehicles.

TrackManager 1000 supports up to 1000 vehicles.

TrackManager 2000 supports up to 1000 vehicles.

Set include license for 3 client software.

In development

3. ADDITIONAL COMPONENTS AND EQUIPMENTS



GuardMagic mTF programming tool

The technological complete set for programming and changes of adjustments of modules **GuardMagic mTF** by a personal computer

Consist of:

- technological software;
- power supply with cable to mTF;
- PC-mTF programming cable.